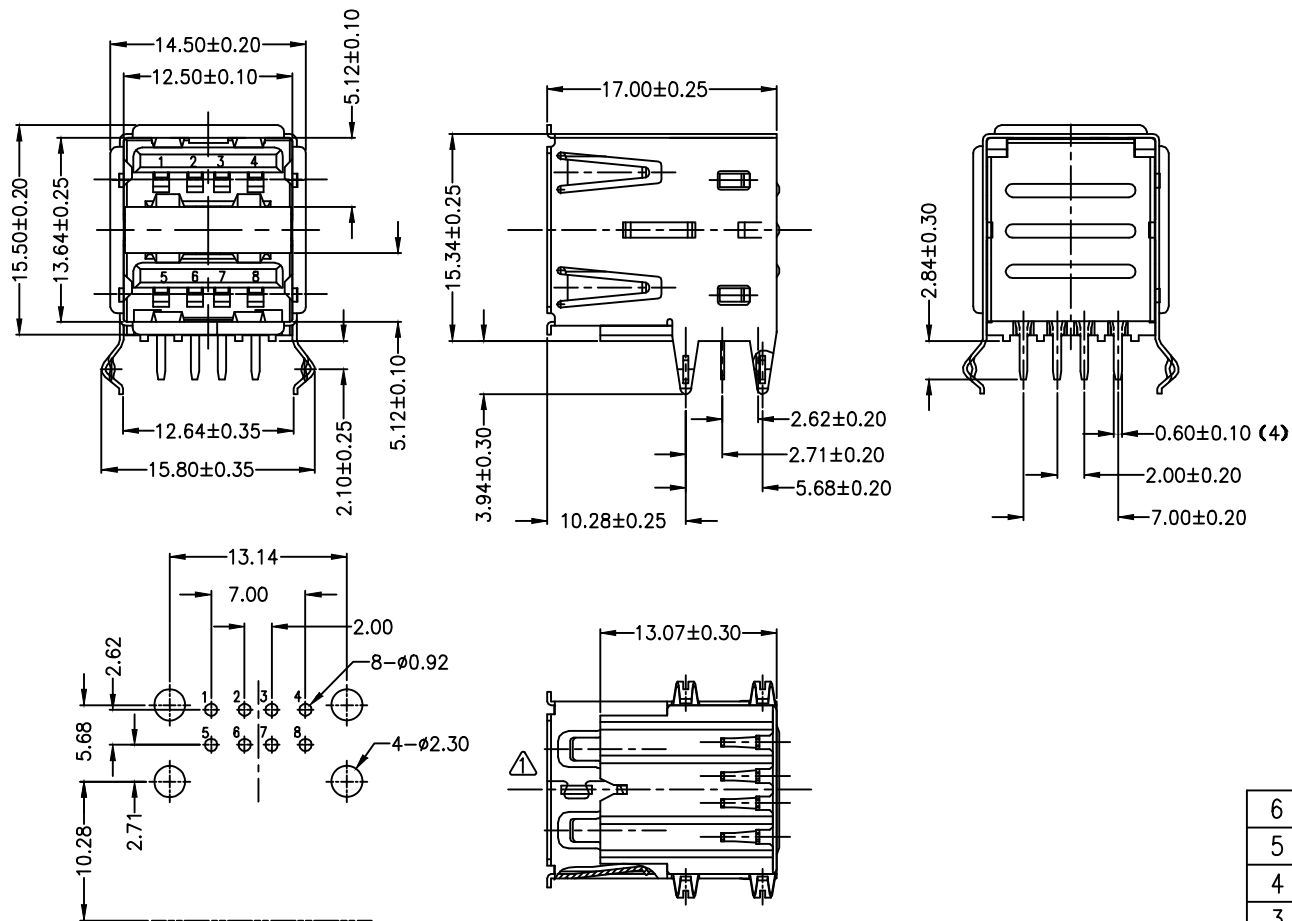


REV	DESCRIPTION	DATE



RECOMMENDED P.C.B HOLE LAYOUT
TOP VIEW(TOLERANCE:±0.10)

Specification

- 1.Current Rating:1.5AMP at 250V AC
Voltage Rating:30V
- 2.Insulation Resistance:1000MΩ Min
- 3.Contact Resistance:30mΩ Max
- 4.Dielectric Withstanding Voltage:500V AC
- 5.Temperature Range:-20°C to +60°C
- 6.Mechanical Characteristics:
Insertion Force:35 Newtons maximum
Extraction Force:10 Newtons minimum

6	Shell in emi	C2680H	1	T=0.30 Plating nickel/Tin
5	Back Shell	SPCC	1	T=0.30 Plating nickel/Tin
4	Front Shell	C2680H	1	T=0.30 Plating nickel/Tin
3	Housing	P.B.T	1	UL94V-0 Nature/Black/White
2	Contact(Long)	C2680EH	4	T=0.25 Plating Gold
1	Contact(short)	C2680EH	4	T=0.25 Plating Gold
NO.	VARIETY	MATERIAL	QT,Y	REMARK

肯耐特电子有限公司				GENERAL TOLERANCE		DRAWN	DATE	DWG. NO.		TITLE	
				X.° ±5°	X. ±0.30	董道丽	20191112				
REV. 1.0				SCALE 1:1		CHECK	DATE	PART. NO.		USB A TYPE(FEMALE)DIP 90° Double deck(W/O Shrapnel)	
				UNIT mm	.X° ±3° .X ±0.38		王芳芳				
				.XX° ±2° .XX ±0.25		APPROVE	DATE	CNT-USB-AFx2-TD-1700			
				.XXX° ±1° .XXX ±0.15		王元中	20191112				