

4

3

2

1

REVISION DATA			
SYM	ECN	DESCRIPTION	DATE

## Technical Data

### Material:

Pin(outer sleeve): Brass,machined CuZn38Pb2

Clip(contact 4 finger): Beryllium copper,heat treated

Plating(outer sleeve):

Tin plated:2µm/80µ"Ni, 5µm/200µ"Sn

Gold plated:2µm/80µ"Ni,Full gold

Plating(contact): 2µm/80µ"Ni, gold or Tin plated

Insulator(backend): Glass filled thermoplastic polyester

UL94V-0

### Electrical:

Current rating: 3Amps/contact max.

Contact resistance:  $\leq 4m\Omega$ /contact

Insulation resistance:  $\geq 1000M\Omega$  at V=100V

Operating voltage: 60VAC/DC

### Mechanical:

Average insertion force with steel pin of

$\varnothing 0.43mm/0.17''$ :  $< 250g$

Average withdrawal force with steel pin of

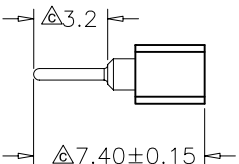
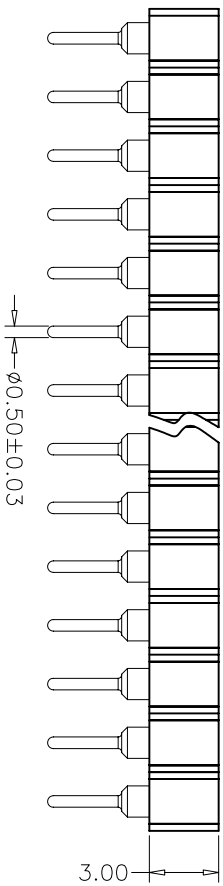
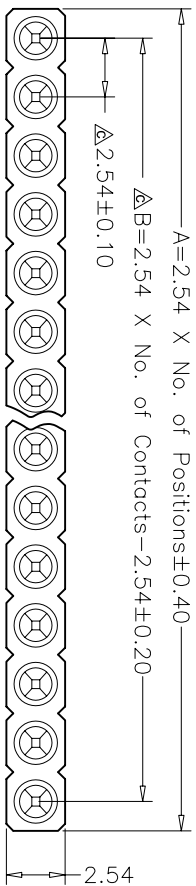
$\varnothing 0.43mm/0.17''$ :  $> 50g$  min.

Mechanical life cycle:min.200

Operating temperatures: Gold plated:-55°C to+105°C

Tin plated:-40°C to+105°C

Critical dimensions:  $\Delta$



# C N T 肯耐特电子有限公司

TOLERANCE:		PROJECTION		TITLE:	
ANGLE	±5°			2.54mmPitch SIP Sockets DIP	
X.XXX	±0.05	DATE	2012-8-20	Pin Length 7.40mm	
X.XX	±0.15	DRAWN	SONG	PART NO: CNT-1C254-1*xx-HS-420/3.2	
X.X	±0.20	CHECKED		DRAWING NO: NP-SHA-NNN1-BPP0740A	
X.	±0.35	APPROVED		REV: B	UNIT: mm
				SCALE: 2:1	SIZE: A4

A

B

C

D

4

3

2

1

A

B

C

D